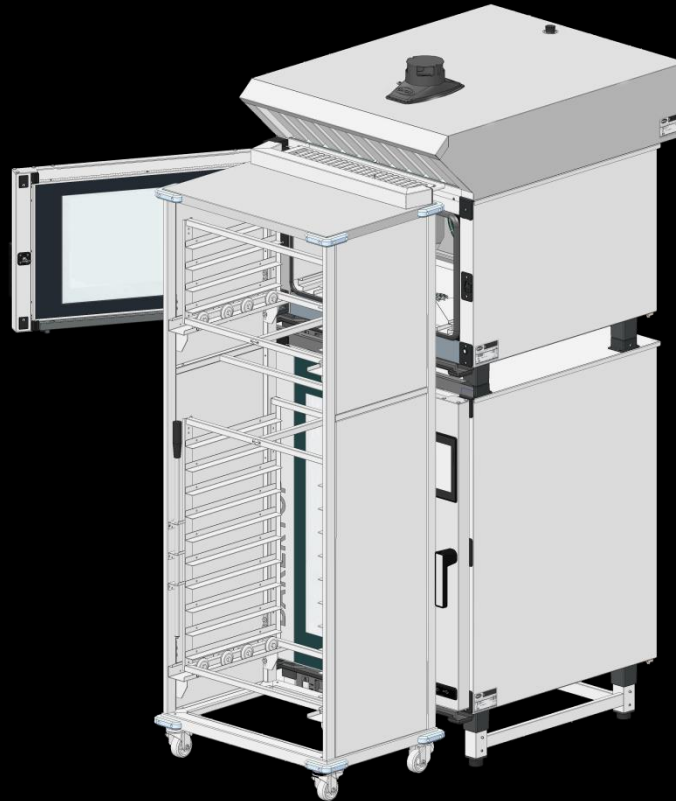


THE UNOX QUICK.Load
IS NOW AVAILABLE FOR



BAKERTOP MIND.MapTM

SITUATION



The continuous increase of the bakery and pastry business always pushes UNOX to come up with user-friendly solutions. One of these is the MAXI.Link feature. Two ovens stacked one on top of the other allow versatility and enhanced organization.

PROBLEM

How many times have you heard:

- “I would like to bake different products simultaneously in order to maximize the results.”
- “The oven loses too much temperature when I load all the trays and the door stays opened.”
- “It takes too much time to load all the trays.”



IMPLICATION

Why offer a trolley system only for 16 trays?
UNOX has launched the Supermarket System a couple of years ago. Some improvements were needed in order to enhance the structure and reliability.



NEED-PAYOFF

This is why UNOX developed a new system. Lighter than before but much more powerful. It becomes easier to load the oven and much faster and safer to take out the trays from the cooking chamber.



The new UNOX QUICK.Load
is available now!

A FOCUS ON THE QUICK.Load



INVENTIVE SIMPLIFICATION

The new QUICK.Load is available in two different configurations:

for XEBC-06EU-E + XEBC-06EU-E**
SOLUTION**



XEBC-10EU-E + XEBC-04EU-E**
SOLUTION**

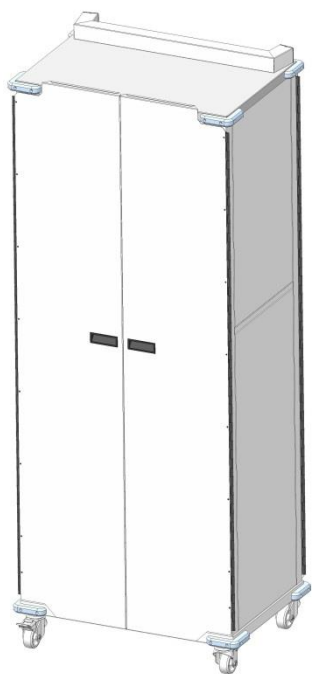


A FOCUS ON THE QUICK.Load

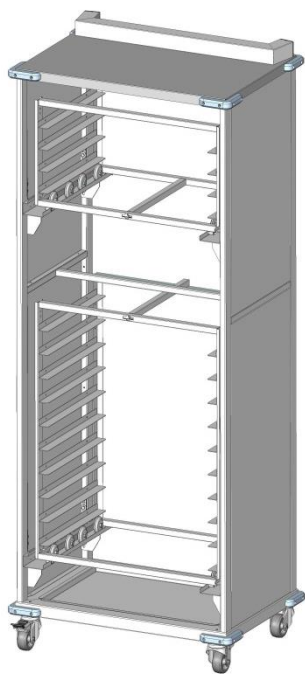


INVENTIVE SIMPLIFICATION

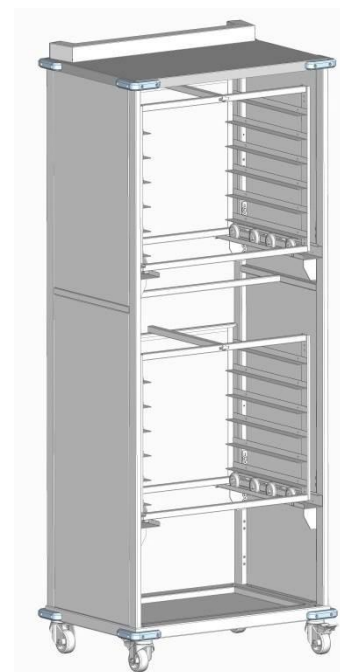
It is available in two different editions.
One with doors and one without doors.



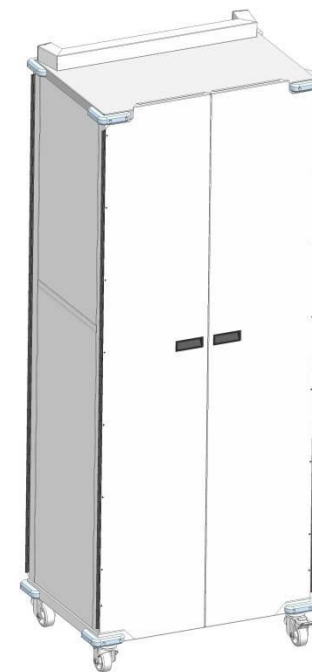
XWBYC-14EU-D



XWBYC-14EU



XWBYC-12EU



XWBYC-12EU-D

TRY IT OUT.



INVENTIVE SIMPLIFICATION



SOME EXAMPLES..



INVENTIVE SIMPLIFICATION





INVENTIVE SIMPLIFICATION